

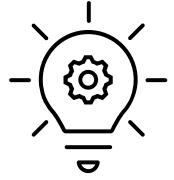
# Ex(change) your life at Laurea UAS 3.3.2026



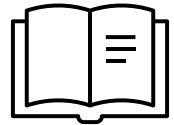
**AMMATTIKORKEAKOULU**  
University of Applied Sciences



# Agenda for today



- What is Laurea



- Exchange studies at Laurea



- Freetime activities in Finland and Helsinki metropolitan area

# Where we are located

Laurea has six campuses in the Helsinki-Uusimaa Region which is the capital region of Finland.

It is home to around 1.7 million people (30% of the population of Finland) and one of the fastest growing areas in Europe.

The Helsinki-Uusimaa Region produces over one third of Finland's GDP.



# Studies in English

**LAUREA HAS SIX** campuses in the Helsinki metropolitan area. The campuses are situated in Hyvinkää, Leppävaara (city of Espoo), Lohja, Otaniemi (city of Espoo), Porvoo and Tikkurila (city of Vantaa). Two campuses, Tikkurila and Leppävaara, offer full degree programmes in English (six Bachelor

programmes and three Master programmes). All study programmes in Finnish also offer courses in English which makes exchanges possible in all programmes. Incoming students have the opportunity to take studies in the following degree programmes:



Nursing



Business  
Information  
Technology



Service  
Business  
Management



Hospitality  
Management



Physiotherapy



Safety,  
Security and  
Risk Management



Social Services

[Studies suitable for exchange students | Study Guide, Laurea](#)

## How will you study?

- **Hands-on learning** through real-life projects with companies.
- **Supportive environment** for both Finnish and international students.
- **Many english-taught programs** in business, IT, health care, and more.
- **Strong community** with active student life and regional campuses.

# Tikkurila campus



- Located in city of Vantaa (Helsinki main railway station 13 minutes by local train)



# Freetime and activities – parties and so much more!



## Laureamko. Events

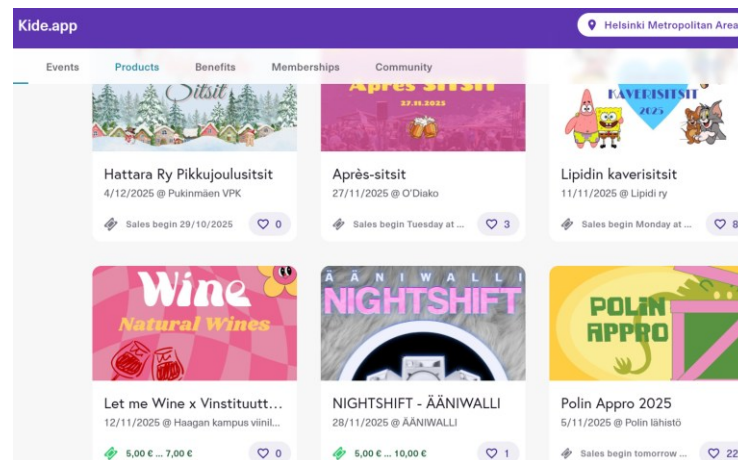
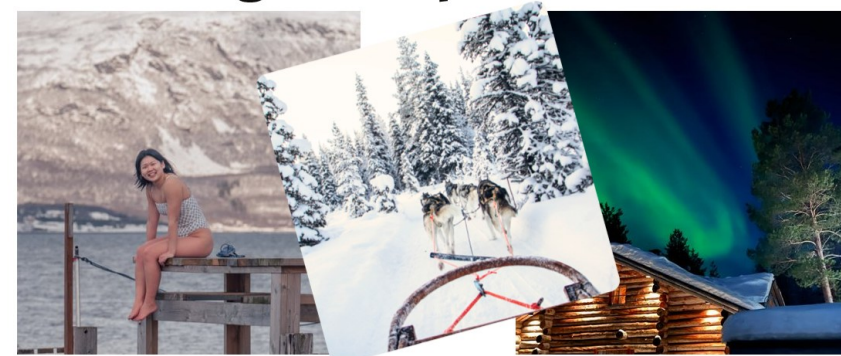
Ticket sales happen in Kide.app. Follow Laureamko on social medias to be the first to know about upcoming events!

- Event types:
  - Appro
  - Sitz
  - Taskpoint rounds



## Laureamko. goes Lapland

21.-27.2.2025



# Sports and games

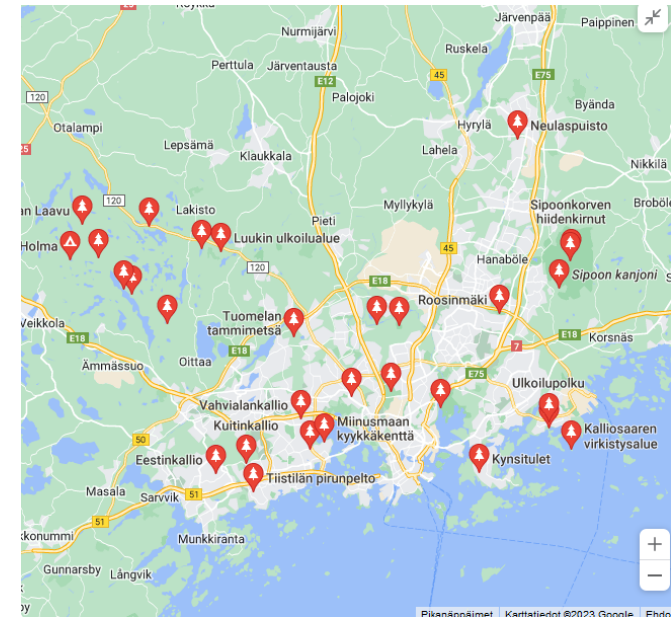
- Hyvinkää and Tikkurila campuses have free gyms
- Laurea Penguins: Ice hockey team for university league
- Game club, Chess club, Finnish language clubs etc.



# Nature



- Finland and Laurea is great a place to study for those interested in nature, hiking etc.
  - More than 75% of Finland's land area is covered by forest
  - There are 187,888 lakes in Finland
  - Easy to access for Helsinki



# Housing

- Exchange students can apply housing from housing company called HOAS
- Due to the large number of exchange student housing applicants, housing is not guaranteed to all applicants, especially in the autumn semester
- Locations for our incoming exchange students:
  - [Junailijankuja 5 – Hoas](#)
  - [Timpurinkuja 1 – Hoas](#)
  - [Kilonrinne 10 – Hoas](#)
  - [Kirjanpitäjänkuja 4 - Hoas](#)
- [Furniture in Hoas exchange student apartments - Hoas](#)



LAU  
REA



# Feedback from previous exchange students

” Laureamko organized lots of events which were always well organized and a lot of fun. Don't miss Stockholm and Lapland. Great experiences. Don't forget to check out all the nice spots in Helsinki and Helsinki area. Rent a car and make a road trip if possible. You will get a nice impression of Finland. Enjoy the nature and the quietness.

” My exchange studies at Laurea gave me a new perspective of learning and can help me in my future studies or work engagement.

” Finland has a very good education system. The lecturers at Laurea speak good English so I had no problems to communicate and understand the contents of the courses. The relationship with the lecturers was very nice and helpful.

” Finland's education is very professional and I'm very happy that I chose this destination for Erasmus.

# Applying and important dates



## Important deadlines:

- Autumn semester: mid August-mid December
  - Application deadline: May 1
- Spring semester: January-May
  - Application deadline: October 31
- [Exchange students to Laurea - Laurea-ammattikorkeakoulu](#)
- The student application is done in SoleMove platform
  - Motivation letter

# Contact information



Saara Vestu

Specialist, International Affairs

[Saara.vestu@laurea.fi](mailto:Saara.vestu@laurea.fi) / [Intl.info@laurea.fi](mailto:Intl.info@laurea.fi)

Incoming Exchanges

Tel. + 358505965726

[www.laurea.fi](http://www.laurea.fi)

**Book your personal time [here.](#)**



**Kiitos and I hope to see  
you in Finland!**

